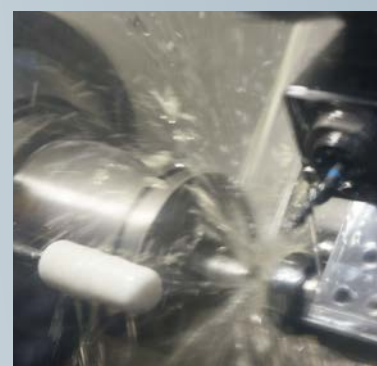




ghibsonvalves.com



not just valves, but solutions



GHIBSON ITALIA

can now boast of more than 35 years of experience in manufacturing of industrial valves. We export our products all over the world always providing our customers the best assistance during all the phases: design, installation, maintenance.

MARKET SEGMENTS

Marine - Water Treatment - Pulp & Paper
Power Plant - Nuclear Plant - HVAC
Chemical & Petrochemical
Powder Conveying Systems
Food & Beverage

APPLICATIONS

Steam isolation - Vacuum service - Refining
Cooling Water systems -
Metallurgical processes
Powder transportation & storage
Oil field recovery - Liquid natural gas
Steam service - Steam Turbine
Saltwater Service - District heating & cooling
Hot Air & Smokes -
Chemicals storage & transportation
Food & Beverage processes

PRODUCTS

BUTTERFLY VALVES

- Rubber Seated
- PTFE Seated
- High Performance
- Damper Valves

CHECK VALVES

- Disc type
- Swing type

ACTUATORS & OPTIONS

- Pneumatic
- Electric
- Hydraulic

CONTROL SYSTEMS

CUSTOMIZED VALVES

CERTIFICATIONS



Ghibson Italia srl

Via Dozza, 2 40069 Zola Predosa BO Italy
tel +39 051 835711 info@ghibson.it

ghibsonvalves.com

ghibsonvalves.com

[GHB 10.2021]



ghibsonvalves.com

CONTROL SYSTEMS

Gibson designs and supplies complete remote control solutions for: pneumatic controls, hydraulic and electro-hydraulic controls plus electric controls including process instrumentation.

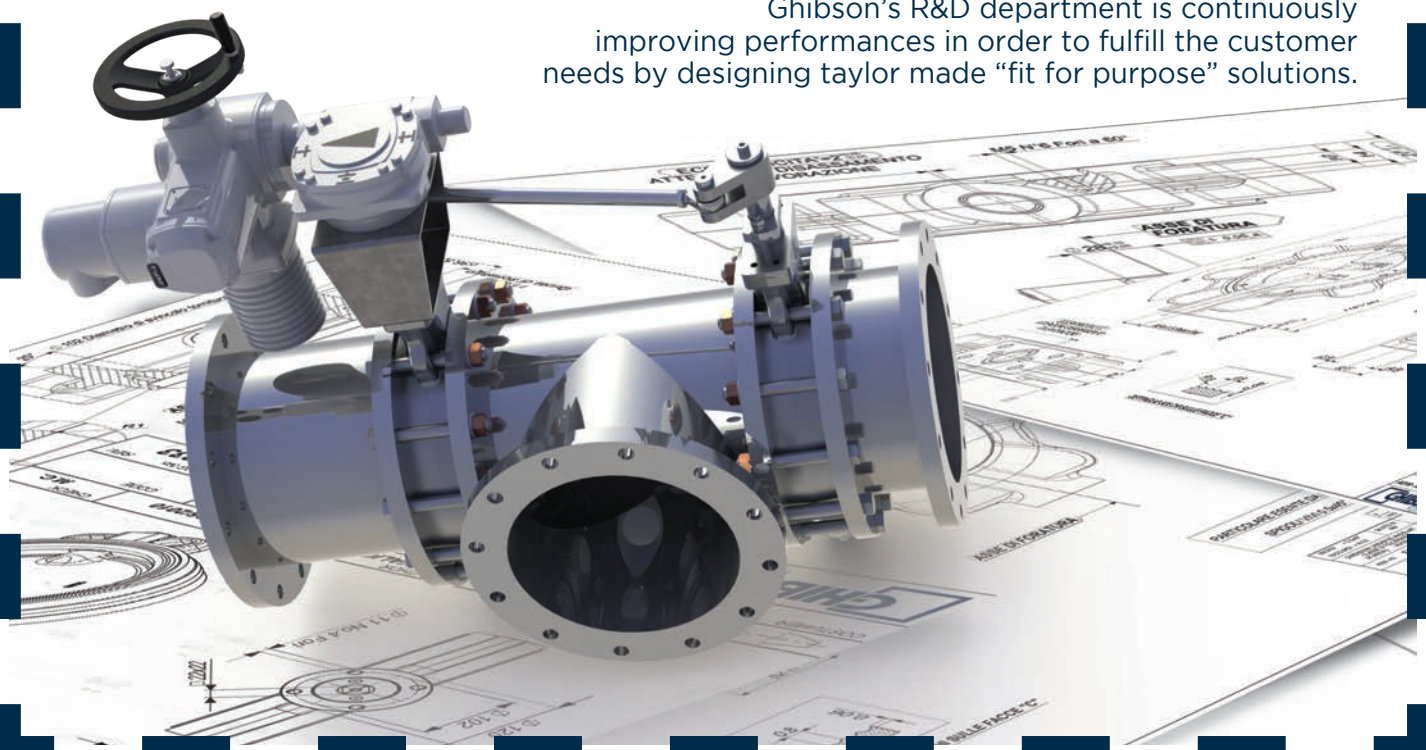
Gibson designs and produces the systems as per Customer requirements and/or as per proposals specifically made by our Design & Technical dpt.



CUSTOMIZED VALVES

Gibson has over 30 years experience in working with OEMs, Engineering companies and end users in developing customized solutions for specific industrial applications (ex. Marine applications, Chemical processing, Powder Conveying Systems etc.).

Gibson's R&D department is continuously improving performances in order to fulfill the customer needs by designing tailor made "fit for purpose" solutions.



CHECK VALVES



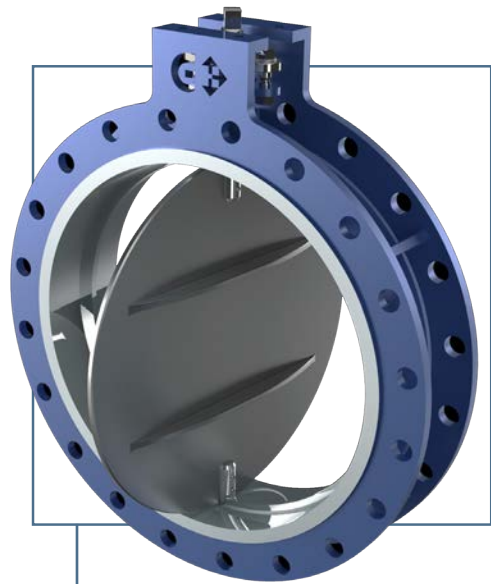
RUBBER SEATED
designed to fit in industrial applications from powder conveyance to marine and petrochemical requirements.

| series | type | DN | Pmax | vacuum | Flanges |
|--------|------------|-----------|-------|--------|-------------------|
| KI | Wafer, Lug | DN40÷500 | 16bar | Y | PN 10-16 • A150 |
| | Wafer, Lug | DN600÷800 | 10bar | Y | PN 6-10-16 • A150 |
| PD | Wafer, Lug | DN80÷500 | 10bar | Y | PN 6-10-16 • A150 |
| | Wafer, Lug | DN600÷800 | 6bar | Y | PN 6-10-16 • A150 |
| KA | Wafer, Lug | DN40÷800 | 20bar | Y | PN 10-16 • A150 |
| KX | Wafer | DN50÷250 | 25bar | Y | PN 25 |
| | Lug | DN50÷200 | 25bar | Y | PN 25 |

DISC TYPE

represent an extensive combination of solutions starting from low pressure design up to 160 Bars.

| series | type | DN | Pmax | vacuum | Flanges |
|--------|---------------|-----------|--------|--------|----------------------|
| GA | 015 | DN15÷80 | 52bar | Y | PN 6÷40 • A150÷300 |
| | | DN100 | 52bar | Y | PN 10÷40 • A150÷300 |
| GB | 015 | DN15÷80 | 52bar | Y | PN 6÷40 • A150÷300 |
| | | DN100 | 52bar | Y | PN 10÷40 • A150÷300 |
| GN | 023 | DN15÷100 | 6bar | Y | PN 6÷16 • A 150 |
| | 011, 015, 095 | DN15÷100 | 52bar | Y | PN 10÷40 • A150÷300 |
| | 091 | DN15÷80 | 52bar | Y | PN 10÷40 • A150÷300 |
| GT | 011, 015, 095 | DN15÷100 | 160bar | Y | PN 63÷160 • A600÷900 |
| | 091 | DN15÷80 | 160bar | Y | PN 63÷160 • A600÷900 |
| GH | 011, 015 | DN125÷200 | 25bar | Y | PN 10÷25 • A150 |



DAMPER VALVES

fully manufactured and designed according to customer requirements, mainly used with high temperature combined with low pressure applications.

| series | type | DN | vacuum | Flanges |
|--------|----------------------|------------|--------|-------------------|
| FA | Wafer, Double Flange | DN150÷2000 | N | PN 6-10-16 • A150 |

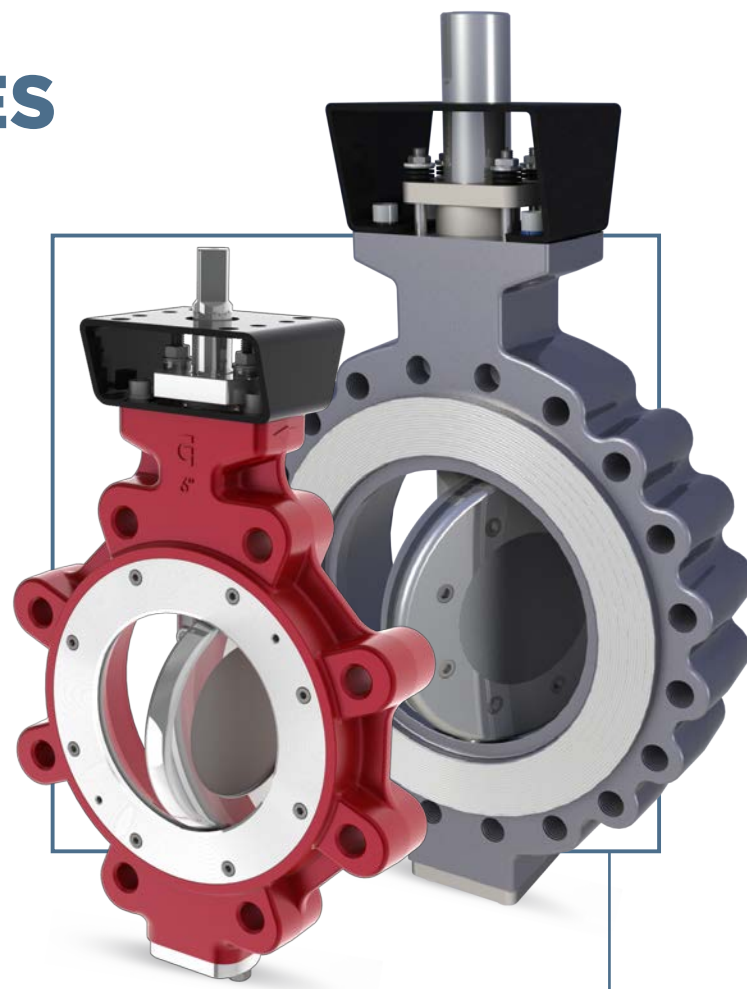
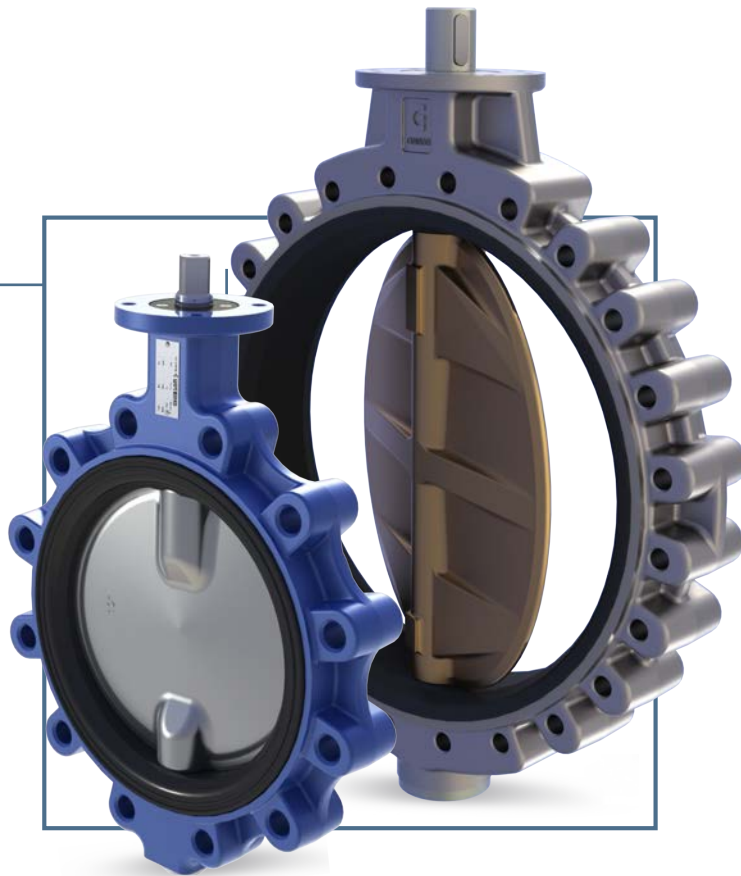


SWING TYPE

manufactured in many materials as well as pressure ratings and flange connections. Available for general purpose applications and also with spring loaded flap.

| series | type | DN | Pmax | vacuum | Flanges |
|--------|---------------|----------|-------|--------|----------------|
| GS | 011, 015, 095 | DN40÷600 | 25bar | Y | PN 6÷25 • A150 |
| | | DN40÷300 | 52bar | Y | A300 |

BUTTERFLY VALVES

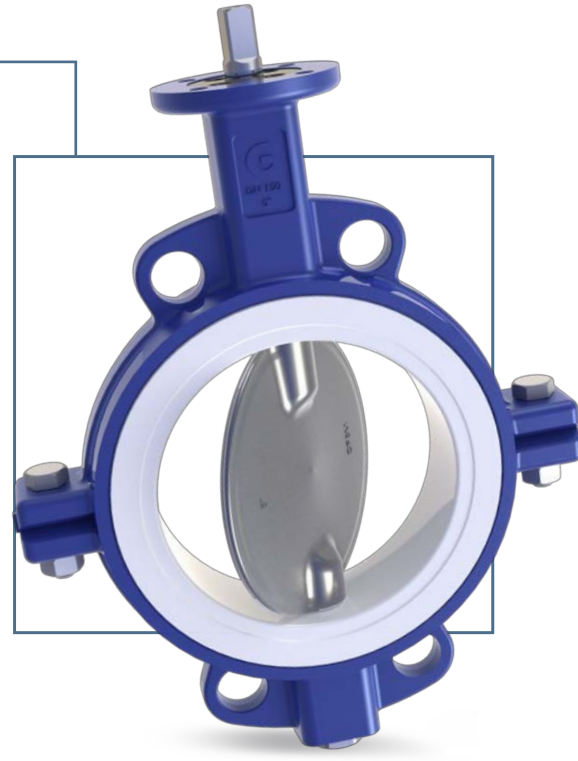


HIGH PERFORMANCE

specifically designed for high demanding applications where the valve performance is critical. Available in different materials and ratings.

The Fire safe version is Fire tested to API 607-6th ed.

| series | type | DN | Pmax | vacuum | Flanges |
|--------|------------|----------|-------|--------------------|--------------------|
| HD | Wafer, Lug | DN40÷500 | 25bar | Y (not metal seat) | PN 10-16-25 • A150 |



PTFE SEATED

available in a wide range of materials combinations, and specifically designed for the chemical industry and heavy duty applications.

| series | type | DN | Pmax | vacuum | Flanges |
|--------|------------|-----------|-------|-----------------|-----------------|
| TT | Wafer, Lug | DN40÷400 | 10bar | Y | PN 10-16 • A150 |
| | Wafer, Lug | DN500÷600 | 6bar | (not PTFE disc) | PN 10-16 • A150 |

MATERIALS

Very large choice of materials including valves of every alloy of **Carbon** or **Stainless Steel**, **Aluminium-bronze**, **Aluminium**, **Superduplex**, **Austenitic Stainless steel**, **Bronze**, **Inconel 625**, **Hastelloy®**, **Monel®**, **6Mo**. On request European castings and other materials can be supplied, such as: **LCB**, **Uranus**, **Alloy**, **DUPLEX**, **Special steels**, **Special bronzes**.

We manufacture valves seated with many elastomer types - **nitrile rubber**, **copolymer EPDM/EPDM HT**, **NBR/FKM**, **carboxide**, **fluoroelastomer**, **polychloroprene**, **natural rubber**, **silicon rubber**, **chlorosulfonated polyethylene**, **Polypropylene**, **PTFE**, **RTFE-PTFE reinforced**, **Polymer UHT...** with several different disc coatings such as **RILSAN®**, **Halar®**, **Chenisit®**, **PTFE**, **PFA** etc.

ACTUATORS & OPTIONS

Gibson offers a wide range of actuators and accessories for valve automation. Normally supplied as part of complete assemblies with valves divided into the following types:

PNEUMATIC

Pneumatic actuators are based on rack and pinion technology, very compact and resistant. Available with different options for any kind of industrial applications and ambient conditions. With all types of accessories. Standard/special executions.

ELECTRIC

Electric actuators are available in different versions for ON-OFF and/or regulating applications. Electric actuators also include Atex versions as well a wide range of customizations.

HYDRAULIC

Gibson's own manufactured hydraulic actuators (ARES series) are designed to fulfill the specific requirement in industrial applications: compact design and high performance are the main characteristics of this product range.

All Gibson's actuators can be supplied for safe areas as well as in conformity with ATEX directive.

Pneumatic and hydraulic actuators can be fitted with solenoid valves, switch boxes and positioners, in many different executions and IP protection degrees.

Gibson has a wide range to propose and is however always ready to find new products and solutions.

